

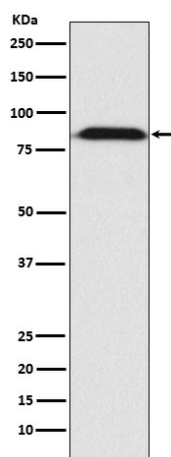
Product datasheet for **TA423627**

FURIN Rabbit Monoclonal Antibody

Product data:

Product Type:	Primary Antibodies
Applications:	ICC/IF, IHC, WB
Recommended Dilution:	WB 1:500~1:2000 IHC 1:50~1:200 ICC/IF 1:50~1:200
Reactivity:	Human, Mouse, Rat
Host:	Rabbit
Isotype:	IgG
Clonality:	Monoclonal
Immunogen:	A synthesized peptide derived from human Furin
Specificity:	Furin Antibody detects endogenous levels of total Furin
Formulation:	Rabbit IgG in phosphate buffered saline , pH 7.4, 150mM NaCl, 0.02% sodium azide and 50% glycerol.
Concentration:	lot specific
Purification:	Affinity-chromatography
Conjugation:	Unconjugated
Storage:	Store at +4°C short term. Store at -22°C long term. Avoid freeze / thaw cycle.
Predicted Protein Size:	87kDa
Gene Name:	furin, paired basic amino acid cleaving enzyme
Database Link:	Entrez Gene 5045 Human P09958
Background:	Furin is likely to represent the ubiquitous endoprotease activity within constitutive secretory pathways and capable of cleavage at the RX(K/R)R consensus motif.
Synonyms:	FUR; FURIN; PACE; PCSK3; SPC1

[View online »](#)

Product images:

Western blot analysis of Furin expression in HepG2 cell lysate.