

Product datasheet for **TA423618**

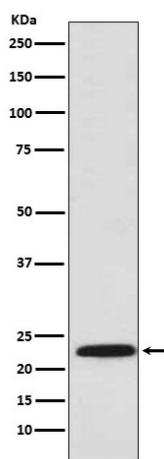
PSMB8 Rabbit Monoclonal Antibody

Product data:

Product Type:	Primary Antibodies
Applications:	FC, ICC/IF, IHC, IP, WB
Recommended Dilution:	WB 1:1000~1:5000 IHC 1:50~1:200 ICC/IF 1:50~1:200 IP 1:50 FC 1:100
Reactivity:	Human, Mouse, Rat
Host:	Rabbit
Isotype:	IgG
Clonality:	Monoclonal
Immunogen:	A synthesized peptide derived from human Proteasome 20S LMP7
Specificity:	Proteasome 20S LMP7 Antibody detects endogenous levels of total Proteasome 20S LMP7
Formulation:	Rabbit IgG in phosphate buffered saline , pH 7.4, 150mM NaCl, 0.02% sodium azide and 50% glycerol.
Concentration:	lot specific
Purification:	Affinity-chromatography
Conjugation:	Unconjugated
Storage:	Store at +4°C short term. Store at -23°C long term. Avoid freeze / thaw cycle.
Predicted Protein Size:	23kDa
Gene Name:	proteasome subunit beta 8
Database Link:	Entrez Gene 5696 Human P28062
Background:	The proteasome is a multicatalytic proteinase complex which is characterized by its ability to cleave peptides with Arg, Phe, Tyr, Leu, and Glu adjacent to the leaving group at neutral or slightly basic pH. The proteasome has an ATP-dependent proteolytic activity.
Synonyms:	D6S216; D6S216E; JMP; LMP7; PSMB5i; PSMB8; RING10


[View online »](#)

Product images:



Western blot analysis of Proteasome 20S LMP7 expression in U937 cell lysate.