

Product datasheet for **TA423607**

TRPC1 Rabbit Monoclonal Antibody

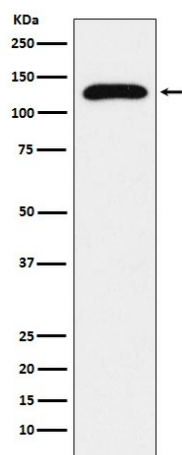
Product data:

Product Type:	Primary Antibodies
Applications:	WB
Recommended Dilution:	WB 1:500~1:2000
Reactivity:	Human, Mouse, Rat
Host:	Rabbit
Isotype:	IgG
Clonality:	Monoclonal
Immunogen:	A synthesized peptide derived from human TRPC1
Specificity:	TRPC1 Antibody detects endogenous levels of total TRPC1
Formulation:	Rabbit IgG in phosphate buffered saline , pH 7.4, 150mM NaCl, 0.02% sodium azide and 50% glycerol.
Concentration:	lot specific
Purification:	Affinity-chromatography
Conjugation:	Unconjugated
Storage:	Store at +4°C short term. Store at -22°C long term. Avoid freeze / thaw cycle.
Predicted Protein Size:	120kDa
Gene Name:	transient receptor potential cation channel subfamily C member 1
Database Link:	Entrez Gene 7220 Human P48995
Background:	Thought to form a receptor-activated non-selective calcium permeant cation channel. Probably is operated by a phosphatidylinositol second messenger system activated by receptor tyrosine kinases or G-protein coupled receptors. Seems to be also activated by intracellular calcium store depletion.
Synonyms:	HTRP1; Mtrp1; TRP1; TRPC1; Trrp1



[View online »](#)

Product images:



Western blot analysis of TRPC1 expression in HepG2 cell lysate.