

## Product datasheet for TA423603

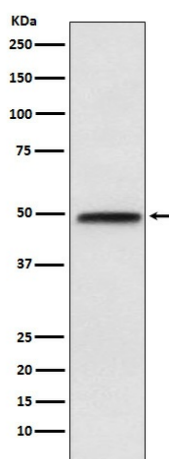
### NFIB Rabbit Monoclonal Antibody

#### Product data:

Product Type:	Primary Antibodies
Applications:	FC, ICC/IF, IHC, IP, WB
Recommended Dilution:	WB 1:500~1:2000 IHC 1:50~1:200 ICC/IF 1:50~1:200 IP 1:50 FC 1:50
Reactivity:	Human, Mouse, Rat
Host:	Rabbit
Isotype:	IgG
Clonality:	Monoclonal
Immunogen:	A synthesized peptide derived from human NFIB / NF1B2
Specificity:	NFIB / NF1B2 Antibody detects endogenous levels of total NFIB / NF1B2
Formulation:	Rabbit IgG in phosphate buffered saline , pH 7.4, 150mM NaCl, 0.02% sodium azide and 50% glycerol.
Concentration:	lot specific
Purification:	Affinity-chromatography
Conjugation:	Unconjugated
Storage:	Store at +4°C short term. Store at -20°C long term. Avoid freeze / thaw cycle.
Predicted Protein Size:	47kDa
Gene Name:	nuclear factor I B
Database Link:	<a href="#">Entrez Gene 4781 Human O00712</a>
Background:	Recognizes and binds the palindromic sequence 5'-TTGGCNNNNNGCCAA-3' present in viral and cellular promoters and in the origin of replication of adenovirus type 2. These proteins are individually capable of activating transcription and replication.
Synonyms:	CTF; HMGIC/NFIB; NF-I/B; NF1-B; NF1B; NF1B2; NFI-B; NFI-RED; Nfib; NFIB2; NFIB3


[View online »](#)

## Product images:



Western blot analysis of NFIB / NF1B2 expression in NIH/3T3 cell lysate.