

## Product datasheet for **TA423573**

### SEC23 (SEC23A) Rabbit Monoclonal Antibody

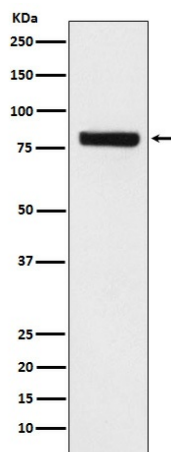
#### Product data:

Product Type:	Primary Antibodies
Applications:	FC, WB
Recommended Dilution:	WB 1:1000~1:5000 FC 1:50
Reactivity:	Human
Host:	Rabbit
Isotype:	IgG
Clonality:	Monoclonal
Immunogen:	A synthesized peptide derived from human SEC23
Specificity:	SEC23 Antibody detects endogenous levels of total SEC23
Formulation:	Rabbit IgG in phosphate buffered saline , pH 7.4, 150mM NaCl, 0.02% sodium azide and 50% glycerol.
Concentration:	lot specific
Purification:	Affinity-chromatography
Conjugation:	Unconjugated
Storage:	Store at +4°C short term. Store at -20°C long term. Avoid freeze / thaw cycle.
Predicted Protein Size:	86kDa
Gene Name:	Sec23 homolog A, coat complex II component
Database Link:	<a href="#">Entrez Gene 10484 Human Q15436</a>
Background:	Component of the COPII coat, that covers ER-derived vesicles involved in transport from the endoplasmic reticulum to the Golgi apparatus.
Synonyms:	CLSD; sec23a



[View online »](#)

## Product images:



Western blot analysis of SEC23 expression in HeLa cell lysate.