

## Product datasheet for **TA423547**

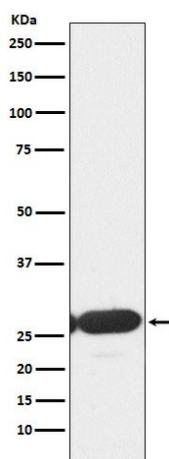
### ERP29 Rabbit Monoclonal Antibody

#### Product data:

Product Type:	Primary Antibodies
Applications:	ICC/IF, IHC, WB
Recommended Dilution:	WB 1:500~1:2000 IHC 1:50~1:200 ICC/IF 1:50~1:200
Reactivity:	Human, Mouse, Rat
Host:	Rabbit
Isotype:	IgG
Clonality:	Monoclonal
Immunogen:	A synthesized peptide derived from human ERp29
Specificity:	ERp29 Antibody detects endogenous levels of total ERp29
Formulation:	Rabbit IgG in phosphate buffered saline , pH 7.4, 150mM NaCl, 0.02% sodium azide and 50% glycerol.
Concentration:	lot specific
Purification:	Affinity-chromatography
Conjugation:	Unconjugated
Storage:	Store at +4°C short term. Store at -22°C long term. Avoid freeze / thaw cycle.
Predicted Protein Size:	29kDa
Gene Name:	endoplasmic reticulum protein 29
Database Link:	<a href="#">Entrez Gene 10961 Human P30040</a>
Background:	Proper protein folding and post-translational modifications are essential for secretory protein export out of the endoplasmic reticulum. This task is accomplished by chaperone proteins such as protein disulfide isomerase (PDI), GRP94, and BiP.
Synonyms:	ERp28; ERP29_HUMAN; ERp31; HEL S 107; PDI-DB; PDIA9


[View online »](#)

## Product images:



Western blot analysis of ERp29 expression in HepG2 cell lysate.