

Product datasheet for **TA423540**

PAR6 (PARD6A) Rabbit Monoclonal Antibody

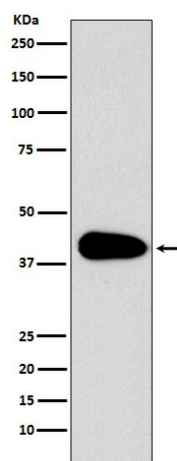
Product data:

Product Type:	Primary Antibodies
Applications:	IP, WB
Recommended Dilution:	WB 1:500~1:2000 IP 1:50
Reactivity:	Human, Mouse, Rat
Host:	Rabbit
Isotype:	IgG
Clonality:	Monoclonal
Immunogen:	A synthesized peptide derived from human PAR6
Specificity:	PAR6 Antibody detects endogenous levels of total PAR6
Formulation:	Rabbit IgG in phosphate buffered saline , pH 7.4, 150mM NaCl, 0.02% sodium azide and 50% glycerol.
Concentration:	lot specific
Purification:	Affinity-chromatography
Conjugation:	Unconjugated
Storage:	Store at +4°C short term. Store at -24°C long term. Avoid freeze / thaw cycle.
Predicted Protein Size:	37kDa
Gene Name:	par-6 family cell polarity regulator alpha
Database Link:	Entrez Gene 50855 Human Q9NPB6
Background:	Adapter protein involved in asymmetrical cell division and cell polarization processes. Probably involved in the formation of epithelial tight junctions. Association with PARD3 may prevent the interaction of PARD3 with F11R/JAM1, thereby preventing tight junction assembly.
Synonyms:	PAR-6A; PAR6; PAR6alpha; PAR6C; TAX40; TIP-40



[View online »](#)

Product images:



Western blot analysis of PAR6 expression in Jurkat cell lysate.