

Product datasheet for **TA423535**

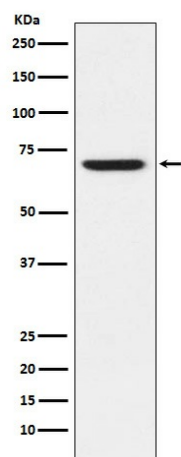
GABA A Receptor alpha 5 (GABRA5) Rabbit Monoclonal Antibody

Product data:

Product Type:	Primary Antibodies
Applications:	ICC/IF, WB
Recommended Dilution:	WB 1:500~1:2000 ICC/IF 1:50~1:200
Reactivity:	Human, Mouse, Rat
Host:	Rabbit
Isotype:	IgG
Clonality:	Monoclonal
Immunogen:	A synthesized peptide derived from human GABA A Receptor alpha 5
Specificity:	GABA A Receptor alpha 5 Antibody detects endogenous levels of total GABA A Receptor alpha 5
Formulation:	Rabbit IgG in phosphate buffered saline , pH 7.4, 150mM NaCl, 0.02% sodium azide and 50% glycerol.
Concentration:	lot specific
Purification:	Affinity-chromatography
Conjugation:	Unconjugated
Storage:	Store at +4°C short term. Store at -21°C long term. Avoid freeze / thaw cycle.
Predicted Protein Size:	70kDa
Gene Name:	gamma-aminobutyric acid type A receptor alpha5 subunit
Database Link:	Entrez Gene 2558 Human P31644
Background:	GABA, the major inhibitory neurotransmitter in the vertebrate brain, mediates neuronal inhibition by binding to the GABA/benzodiazepine receptor and opening an integral chloride channel.
Synonyms:	GAA 5; GAA5; GABRA 5; Gabra5

[View online »](#)

Product images:



Western blot analysis of GABA A Receptor alpha 5 expression in 293T cell lysate.