

## Product datasheet for **TA423503**

### **E2F6 Rabbit Monoclonal Antibody**

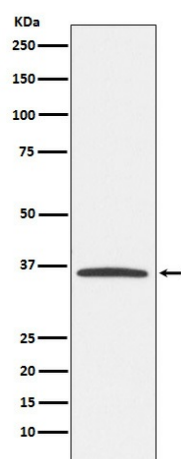
#### **Product data:**

|                         |   |
|-------------------------|---|
| Product Type:           | Primary Antibodies  |
| Applications:           | FC, ICC/IF, WB  |
| Recommended Dilution:   | WB 1:500~1:2000 ICC/IF 1:50~1:200 FC 1:50   |
| Reactivity:             | Human   |
| Host:                   | Rabbit  |
| Isotype:                | IgG   |
| Clonality:              | Monoclonal  |
| Immunogen:              | A synthesized peptide derived from human E2F6   |
| Specificity:            | E2F6 Antibody detects endogenous levels of total E2F6   |
| Formulation:            | Rabbit IgG in phosphate buffered saline , pH 7.4, 150mM NaCl, 0.02% sodium azide and 50% glycerol.  |
| Concentration:          | lot specific  |
| Purification:           | Affinity-chromatography   |
| Conjugation:            | Unconjugated  |
| Storage:                | Store at +4°C short term. Store at -20°C long term. Avoid freeze / thaw cycle.  |
| Predicted Protein Size: | 32kDa   |
| Gene Name:              | E2F transcription factor 6  |
| Database Link:          | <a href="#">Entrez Gene 1876 Human O75461</a>   |
| Background:             | Inhibitor of E2F-dependent transcription. Binds DNA cooperatively with DP proteins through the E2 recognition site, 5'-TTTC[CG]CGC-3'. Has a preference for the 5'-TTTCCCGC-3' E2F recognition site. E2F-6 lacks the transcriptional activation and pocket protein binding domains. |
| Synonyms:               | E2F-6; E2F 6; E2F6; EMA   |



[View online »](#)

## Product images:



Western blot analysis of E2F6 expression in K562 cell lysate.