

Product datasheet for **TA423494**

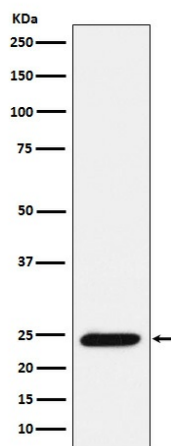
BMF Rabbit Monoclonal Antibody [Clone ID: OTIRA1313]

Product data:

Product Type:	Primary Antibodies
Clone Name:	OTIRA1313
Applications:	FC, WB
Recommended Dilution:	WB 1:500~1:2000 FC 1:50
Reactivity:	Human, Mouse, Rat
Host:	Rabbit
Isotype:	IgG
Clonality:	Monoclonal
Immunogen:	A synthesized peptide derived from human Bmf
Specificity:	Bmf Antibody detects endogenous levels of total Bmf
Formulation:	Rabbit IgG in 10mM phosphate buffered saline , pH 7.4, 150mM sodium chloride, 0.05% BSA, 0.02% sodium azide and 50% glycerol.
Concentration:	lot specific
Purification:	Affinity-chromatography
Conjugation:	Unconjugated
Storage:	Store at +4°C short term. Store at -21°C long term. Avoid freeze / thaw cycle.
Predicted Protein Size:	24kDa
Gene Name:	Bcl2 modifying factor
Database Link:	Entrez Gene 90427 Human Q96LC9
Background:	May play a role in apoptosis. Isoform 1 seems to be the main initiator.
Synonyms:	Bcl2 modifying factor; Bmf



Product images:



Western blot analysis of Bmf expression in Ramos cell lysate.