

## Product datasheet for **TA423487**

### **GABA A Receptor beta 2 (GABRB2) Rabbit Monoclonal Antibody**

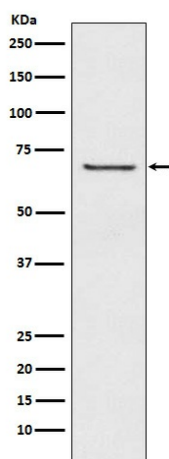
#### **Product data:**

Product Type:	Primary Antibodies
Applications:	WB
Recommended Dilution:	WB 1:500~1:2000
Reactivity:	Human, Mouse, Rat
Host:	Rabbit
Isotype:	IgG
Clonality:	Monoclonal
Immunogen:	A synthesized peptide derived from human GABA A Receptor beta 2
Specificity:	GABA A Receptor beta 2 Antibody detects endogenous levels of total GABA A Receptor beta 2
Formulation:	Rabbit IgG in phosphate buffered saline , pH 7.4, 150mM NaCl, 0.02% sodium azide and 50% glycerol.
Concentration:	lot specific
Purification:	Affinity-chromatography
Conjugation:	Unconjugated
Storage:	Store at +4°C short term. Store at -22°C long term. Avoid freeze / thaw cycle.
Predicted Protein Size:	59kDa
Gene Name:	gamma-aminobutyric acid type A receptor beta2 subunit
Database Link:	<a href="#">Entrez Gene 2561 Human P47870</a>
Background:	GABA, the major inhibitory neurotransmitter in the vertebrate brain, mediates neuronal inhibition by binding to the GABA/benzodiazepine receptor and opening an integral chloride channel.
Synonyms:	GABA; GABA(A) receptor beta 2; GABA(A) receptor subunit beta-2; GABRB2



[View online »](#)

## Product images:



Western blot analysis of GABA A Receptor beta 2 expression in A549 cell lysate.