

Product datasheet for TA423461

Presenilin 1 (PSEN1) Rabbit Monoclonal Antibody

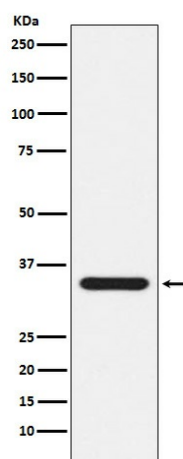
Product data:

Product Type:	Primary Antibodies
Applications:	FC, WB
Recommended Dilution:	WB 1:500~1:2000 FC1:10
Reactivity:	Human, Mouse, Rat
Host:	Rabbit
Isotype:	IgG
Clonality:	Monoclonal
Immunogen:	A synthesized peptide derived from human Presenilin 1
Specificity:	Presenilin 1 Antibody detects endogenous levels of total Presenilin 1
Formulation:	Rabbit IgG in phosphate buffered saline , pH 7.4, 150mM NaCl, 0.02% sodium azide and 50% glycerol.
Concentration:	lot specific
Purification:	Affinity-chromatography
Conjugation:	Unconjugated
Storage:	Store at +4°C short term. Store at -24°C long term. Avoid freeze / thaw cycle.
Predicted Protein Size:	28kDa
Gene Name:	presenilin 1
Database Link:	Entrez Gene 5663 Human P49768
Background:	Probable catalytic subunit of the gamma-secretase complex, an endoprotease complex that catalyzes the intramembrane cleavage of integral membrane proteins such as Notch receptors and APP (beta-amyloid precursor protein). Requires the other members of the gamma-secretase complex to have a protease activity.
Synonyms:	AD3; Ad3h; FAD; Protein S182; PS1-CTF12; PSEN1; PSNL1; S182



[View online »](#)

Product images:



Western blot analysis of Presenilin 1 expression in Jurkat cell lysate.