

Product datasheet for **TA423419**

NDUFS2 Rabbit Monoclonal Antibody

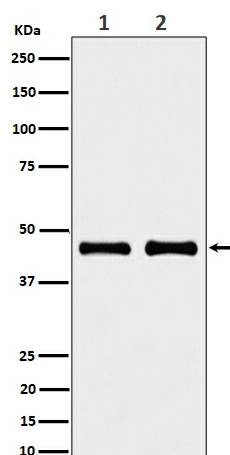
Product data:

Product Type:	Primary Antibodies
Applications:	IHC, IP, WB
Recommended Dilution:	WB 1:500~1:2000 IHC 1:50~1:200 IP 1:50
Reactivity:	Human, Mouse, Rat
Host:	Rabbit
Isotype:	IgG
Clonality:	Monoclonal
Immunogen:	A synthesized peptide derived from human NDUFS2
Specificity:	NDUFS2 Antibody detects endogenous levels of total NDUFS2
Formulation:	Rabbit IgG in phosphate buffered saline , pH 7.4, 150mM NaCl, 0.02% sodium azide and 50% glycerol.
Concentration:	lot specific
Purification:	Affinity-chromatography
Conjugation:	Unconjugated
Storage:	Store at +4°C short term. Store at -23°C long term. Avoid freeze / thaw cycle.
Predicted Protein Size:	45kDa
Gene Name:	NADH:ubiquinone oxidoreductase core subunit S2
Database Link:	Entrez Gene 4720 Human O75306
Background:	Core subunit of the mitochondrial membrane respiratory chain NADH dehydrogenase (Complex I) that is believed to belong to the minimal assembly required for catalysis. Complex I functions in the transfer of electrons from NADH to the respiratory chain. The immediate electron acceptor for the enzyme is believed to be ubiquinone.
Synonyms:	Ndufs2



[View online »](#)

Product images:



Western blot analysis of NDUFS2 expression in (1) HeLa cell lysate; (2) RAW264.7 HeLa cell lysate.