

Product datasheet for TA423406

NTH1 (NTHL1) Rabbit Monoclonal Antibody

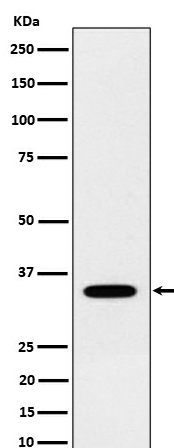
Product data:

| | |
|-------------------------|---|
| Product Type: | Primary Antibodies |
| Applications: | ICC/IF, IHC, WB |
| Recommended Dilution: | WB 1:500~1:2000 IHC 1:50~1:200 ICC/IF 1:50~1:200 |
| Reactivity: | Human |
| Host: | Rabbit |
| Isotype: | IgG |
| Clonality: | Monoclonal |
| Immunogen: | A synthesized peptide derived from human NTH1 |
| Specificity: | NTH1 Antibody detects endogenous levels of total NTH1 |
| Formulation: | Rabbit IgG in phosphate buffered saline , pH 7.4, 150mM NaCl, 0.02% sodium azide and 50% glycerol. |
| Concentration: | lot specific |
| Purification: | Affinity-chromatography |
| Conjugation: | Unconjugated |
| Storage: | Store at +4°C short term. Store at -22°C long term. Avoid freeze / thaw cycle. |
| Predicted Protein Size: | 34kDa |
| Gene Name: | nth-like DNA glycosylase 1 |
| Database Link: | Entrez Gene 4913 Human P78549 |
| Background: | Has both an apurinic and/or apyrimidinic endonuclease activity and a DNA N-glycosylase activity. Incises damaged DNA at cytosines, thymines and guanines. Acts on a damaged strand, 5' from the damaged site. Required for the repair of both oxidative DNA damage and spontaneous mutagenic lesions. |
| Synonyms: | hNTH1; NTH1; Nthl1; OCTS3 |



[View online »](#)

Product images:



Western blot analysis of NTH1 expression in 293 cell lysate.