

Product datasheet for **TA423397**

DEGS1 Rabbit Monoclonal Antibody

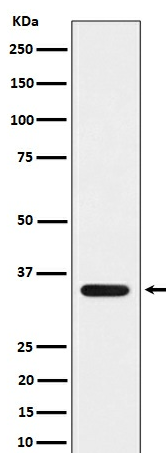
Product data:

Product Type:	Primary Antibodies
Applications:	WB
Recommended Dilution:	WB 1:500~1:2000
Reactivity:	Human
Host:	Rabbit
Isotype:	IgG
Clonality:	Monoclonal
Immunogen:	A synthesized peptide derived from human MLD
Specificity:	MLD Antibody detects endogenous levels of total MLD
Formulation:	Rabbit IgG in phosphate buffered saline , pH 7.4, 150mM NaCl, 0.02% sodium azide and 50% glycerol.
Concentration:	lot specific
Purification:	Affinity-chromatography
Conjugation:	Unconjugated
Storage:	Store at +4°C short term. Store at -22°C long term. Avoid freeze / thaw cycle.
Predicted Protein Size:	34kDa
Gene Name:	delta(4)-desaturase, sphingolipid 1
Database Link:	Entrez Gene 8560 Human O15121
Background:	DEGS1 is a member of the membrane fatty acid desaturase family which is responsible for inserting double bonds into specific positions in fatty acids. It contains three His containing consensus motifs that are characteristic of a group of membrane fatty acid desaturases.
Synonyms:	DEGS; DEGS 1; DES1; FADS7; MIG15; MLD



[View online »](#)

Product images:



Western blot analysis of MLD expression in 293 cell lysate.