

Product datasheet for **TA423300**

Claudin 4 (CLDN4) Rabbit Monoclonal Antibody

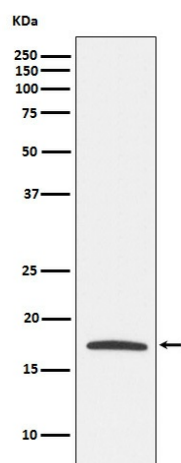
Product data:

Product Type:	Primary Antibodies
Applications:	IHC, IP, WB
Recommended Dilution:	WB 1:500~1:1000 IHC 1:100~1:500 IP 1:20
Reactivity:	Human
Host:	Rabbit
Isotype:	IgG
Clonality:	Monoclonal
Immunogen:	A synthesized peptide derived from human Claudin 4
Specificity:	Claudin 4 Antibody detects endogenous levels of total Claudin 4
Formulation:	Rabbit IgG in phosphate buffered saline , pH 7.4, 150mM NaCl, 0.02% sodium azide and 50% glycerol.
Concentration:	lot specific
Purification:	Affinity-chromatography
Conjugation:	Unconjugated
Storage:	Store at +4°C short term. Store at -24°C long term. Avoid freeze / thaw cycle.
Predicted Protein Size:	18kDa
Gene Name:	claudin 4
Database Link:	Entrez Gene 1364 Human O14493
Background:	Plays a major role in tight junction-specific obliteration of the intercellular space.
Synonyms:	CLD4; CLDN4; Clostridium perfringens enterotoxin receptor; CPE-R; CPE- receptor; CPER; CPETR1; WBSR8; Williams-Beuren syndrome chromosome region 8 protein



[View online »](#)

Product images:



Western blot analysis of Claudin 4 expression in MCF7 cell lysate.