

Product datasheet for **TA423266**

Insulin Receptor R (INSRR) Rabbit Monoclonal Antibody

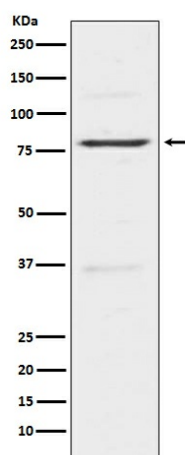
Product data:

Product Type:	Primary Antibodies
Applications:	IHC, WB
Recommended Dilution:	WB 1:500~1:2000 IHC 1:50~1:200
Reactivity:	Human, Mouse, Rat
Host:	Rabbit
Isotype:	IgG
Clonality:	Monoclonal
Immunogen:	A synthesized peptide derived from human Insulin Receptor R
Specificity:	Insulin Receptor R Antibody detects endogenous levels of total Insulin Receptor R
Formulation:	Rabbit IgG in phosphate buffered saline , pH 7.4, 150mM NaCl, 0.02% sodium azide and 50% glycerol.
Concentration:	lot specific
Purification:	Affinity-chromatography
Conjugation:	Unconjugated
Storage:	Store at +4°C short term. Store at -22°C long term. Avoid freeze / thaw cycle.
Predicted Protein Size:	80kDa
Gene Name:	insulin receptor related receptor
Database Link:	Entrez Gene 3645 Human P14616
Background:	This receptor probably binds an insulin related protein and has a tyrosine-protein kinase activity. It phosphorylates the insulin receptor substrates IRS-1 and IRS-2.
Synonyms:	INSRR; Insulin receptor related receptor precursor; IRR; IR related receptor; Sirr



[View online »](#)

Product images:



Western blot analysis of Insulin Receptor R expression in Hela cell lysate.