

Product datasheet for **TA423259**

Alkaline Phosphatase (ALPP) Rabbit Monoclonal Antibody [Clone ID: OTIRA1078]

Product data:

Product Type:	Primary Antibodies
Clone Name:	OTIRA1078
Applications:	ICC/IF, IHC, WB
Recommended Dilution:	WB 1:1000~1:5000 IHC 1:50~1:200 ICC/IF 1:50~1:200
Reactivity:	Human
Host:	Rabbit
Isotype:	IgG
Clonality:	Monoclonal
Immunogen:	A synthesized peptide derived from human Placental alkaline phosphatase (PLAP)
Specificity:	Placental alkaline phosphatase (PLAP) Antibody detects endogenous levels of total Placental alkaline phosphatase (PLAP)
Formulation:	Rabbit IgG in 10mM phosphate buffered saline , pH 7.4, 150mM sodium chloride, 0.05% BSA, 0.02% sodium azide and 50% glycerol.
Concentration:	lot specific
Purification:	Affinity-chromatography
Conjugation:	Unconjugated
Storage:	Store at +4°C short term. Store at -23°C long term. Avoid freeze / thaw cycle.
Predicted Protein Size:	70kDa
Gene Name:	alkaline phosphatase, placental
Database Link:	Entrez Gene 250 Human P05187

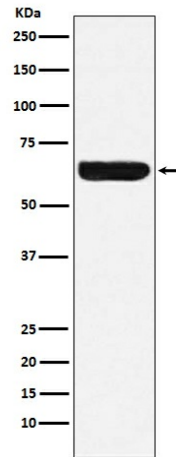


Background:

PLAP may assist in guiding migratory cells and transporting specific molecules, such as fatty acids and immunoglobulins, across the plasma membrane. The three tissue-specific APs identified in human, PLAP, germ cell AP (GCAP) and intestinal AP, are 90-98% homologous and their genes are clustered on chromosome 2q.

Synonyms:

Alkaline phosphatase, placental type; Alkaline phosphatase Regan isozyme; ALPP; Placental alkaline phosphatase 1; PLAP; PLAP-1

Product images:

Western blot analysis of Placental alkaline phosphatase (PLAP) expression in HeLa cell lysate.