

## Product datasheet for TA423237

### GABARAP Rabbit Monoclonal Antibody [Clone ID: OTIRA1056]

#### Product data:

<b>Product Type:</b>	Primary Antibodies
<b>Clone Name:</b>	OTIRA1056
<b>Applications:</b>	FC, ICC/IF, IHC, WB
<b>Recommended Dilution:</b>	WB 1:500~1:2000 IHC 1:100~1:500 ICC/IF 1:50~1:200 FC 1:50
<b>Reactivity:</b>	Human, Mouse, Rat
<b>Host:</b>	Rabbit
<b>Isotype:</b>	IgG
<b>Clonality:</b>	Monoclonal
<b>Immunogen:</b>	A synthesized peptide derived from human GABARAP
<b>Specificity:</b>	GABARAP Antibody detects endogenous levels of total GABARAP
<b>Formulation:</b>	Rabbit IgG in 10mM phosphate buffered saline , pH 7.4, 150mM sodium chloride, 0.05% BSA, 0.02% sodium azide and 50% glycerol.
<b>Concentration:</b>	lot specific
<b>Purification:</b>	Affinity-chromatography
<b>Conjugation:</b>	Unconjugated
<b>Storage:</b>	Store at +4°C short term. Store at -22°C long term. Avoid freeze / thaw cycle.
<b>Predicted Protein Size:</b>	17kDa
<b>Gene Name:</b>	GABA type A receptor-associated protein
<b>Database Link:</b>	<a href="#">Entrez Gene 11337 Human</a> <a href="#">O95166</a>

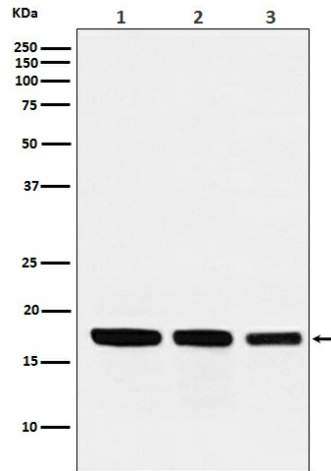


**Background:**

GABARAP is cleaved at its carboxyl terminus, which leads to conjugation by either of the phospholipids phosphatidylethanolamine or phosphatidylserine. This processing converts GABARAP from a type I to a type II membrane bound form involved in autophagosome biogenesis. Processing of GABARAP involves cleavage by Atg4 family members followed by conjugation by the E1 and E2 like enzymes Atg7 and Atg3.

**Synonyms:**

GABARAP; GABARAPL1; GABARAPL2

**Product images:**

Western blot analysis of GABARAP expression in (1) HepG2 cell lysate; (2) Mouse kidney lysate; (3) Rat heart lysate.