

Product datasheet for **TA423233**

GATA6 Rabbit Monoclonal Antibody

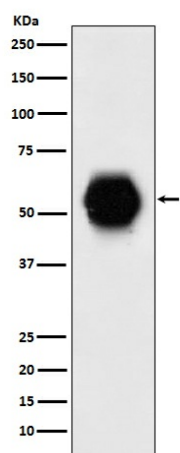
Product data:

Product Type:	Primary Antibodies
Applications:	ICC/IF, WB
Recommended Dilution:	WB 1:500~1:2000 ICC/IF 1:50~1:200
Reactivity:	Human
Host:	Rabbit
Isotype:	IgG
Clonality:	Monoclonal
Immunogen:	A synthesized peptide derived from human Gata 6
Specificity:	Gata6 Antibody detects endogenous levels of total Gata 6
Formulation:	Rabbit IgG in phosphate buffered saline , pH 7.4, 150mM NaCl, 0.02% sodium azide and 50% glycerol.
Concentration:	lot specific
Purification:	Affinity-chromatography
Conjugation:	Unconjugated
Storage:	Store at +4°C short term. Store at -20°C long term. Avoid freeze / thaw cycle.
Predicted Protein Size:	60kDa
Gene Name:	GATA binding protein 6
Database Link:	Entrez Gene 2627 Human Q92908
Background:	Thought to be important for regulating terminal differentiation and/or proliferation.
Synonyms:	GATA-binding factor 6; Gata6; Gata binding factor 6; Transcription factor Gata 6



[View online »](#)

Product images:



Western blot analysis of Gata 6 expression in human fetal heart lysate.