

Product datasheet for **TA423216**

BMAL1 (ARNTL) Rabbit Monoclonal Antibody

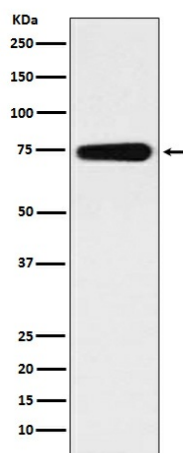
Product data:

Product Type:	Primary Antibodies
Applications:	WB
Recommended Dilution:	WB 1:500~1:2000
Reactivity:	Human, Mouse, Rat
Host:	Rabbit
Isotype:	IgG
Clonality:	Monoclonal
Immunogen:	A synthesized peptide derived from human BMAL1
Specificity:	BMAL1 Antibody detects endogenous levels of total BMAL1
Formulation:	Rabbit IgG in phosphate buffered saline , pH 7.4, 150mM NaCl, 0.02% sodium azide and 50% glycerol.
Concentration:	lot specific
Purification:	Affinity-chromatography
Conjugation:	Unconjugated
Storage:	Store at +4°C short term. Store at -22°C long term. Avoid freeze / thaw cycle.
Predicted Protein Size:	68kDa
Gene Name:	aryl hydrocarbon receptor nuclear translocator like
Database Link:	Entrez Gene 406 Human O00327
Background:	The cellular circadian clockwork consists of interwoven positive and negative regulatory loops, or limbs (1,2). The positive limb includes the CLOCK and BMAL1 proteins, two basic helix-loop-helix-PAS containing transcription factors that bind E box enhancer elements and activate transcription of their target genes.
Synonyms:	bHLHe5; BMAL1c; Brain and muscle ARNT like 1; CG8727 PA; JAP3; Member of PAS protein 3; MOP3; PASD3; TIC



[View online »](#)

Product images:



Western blot analysis of BMAL1 expression in human fetal heart lysate.