

Product datasheet for **TA423215**

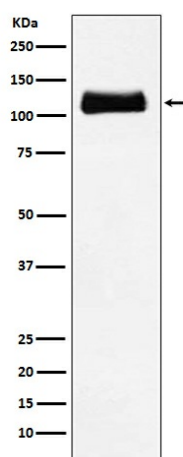
ApoER2 (LRP8) Rabbit Monoclonal Antibody

Product data:

Product Type:	Primary Antibodies
Applications:	IP, WB
Recommended Dilution:	WB 1:500~1:2000 IP 1:50
Reactivity:	Human, Mouse, Rat
Host:	Rabbit
Isotype:	IgG
Clonality:	Monoclonal
Immunogen:	A synthesized peptide derived from human ApoER2
Specificity:	ApoER2 Antibody detects endogenous levels of total ApoER2
Formulation:	Rabbit IgG in phosphate buffered saline , pH 7.4, 150mM NaCl, 0.02% sodium azide and 50% glycerol.
Concentration:	lot specific
Purification:	Affinity-chromatography
Conjugation:	Unconjugated
Storage:	Store at +4°C short term. Store at -21°C long term. Avoid freeze / thaw cycle.
Predicted Protein Size:	106kDa
Gene Name:	LDL receptor related protein 8
Database Link:	Entrez Gene 7804 Human Q14114
Background:	Cell surface receptor for Reelin (RELN) and apolipoprotein E (apoE)-containing ligands. LRP8 participates in transmitting the extracellular Reelin signal to intracellular signaling processes, by binding to DAB1 on its cytoplasmic tail.
Synonyms:	APOER2; Apolipoprotein E receptor 2; LRP8

[View online »](#)

Product images:



Western blot analysis of ApoER2 expression in C6 cell lysate.