

Product datasheet for **TA423205**

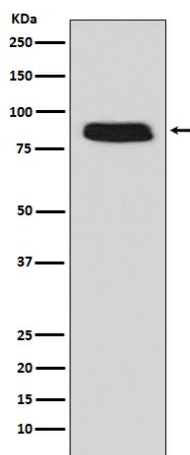
GCSF Receptor (CSF3R) Rabbit Monoclonal Antibody

Product data:

Product Type:	Primary Antibodies
Applications:	FC, WB
Recommended Dilution:	WB 1:500~1:2000 FC 1:200
Reactivity:	Human
Host:	Rabbit
Isotype:	IgG
Clonality:	Monoclonal
Immunogen:	A synthesized peptide derived from human GCSF Receptor (CD114)
Specificity:	GCSF Receptor (CD114) Antibody detects endogenous levels of total GCSF Receptor (CD114)
Formulation:	Rabbit IgG in phosphate buffered saline , pH 7.4, 150mM NaCl, 0.02% sodium azide and 50% glycerol.
Concentration:	lot specific
Purification:	Affinity-chromatography
Conjugation:	Unconjugated
Storage:	Store at +4°C short term. Store at -21°C long term. Avoid freeze / thaw cycle.
Predicted Protein Size:	92kDa
Gene Name:	colony stimulating factor 3 receptor
Database Link:	Entrez Gene 1441 Human Q99062
Background:	Receptor for granulocyte colony-stimulating factor (CSF3), essential for granulocytic maturation. Plays a crucial role in the proliferation, differentiation and survival of cells along the neutrophilic lineage. In addition it may function in some adhesion or recognition events at the cell surface.
Synonyms:	CD114 antigen; Colony stimulating factor 3 receptor (granulocyte); CSF3R; Csfr; G-CSF receptor; GCSFR

[View online »](#)

Product images:



Western blot analysis of GCSF Receptor (CD114) expression in Caco-2 cell lysate.