

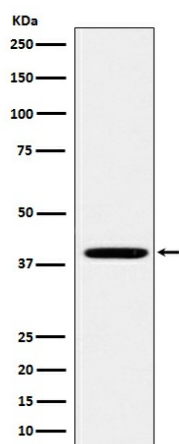
Product datasheet for **TA423189**

Folate Binding Protein (FOLR1) Rabbit Monoclonal Antibody

Product data:

| | |
|-------------------------|---|
| Product Type: | Primary Antibodies |
| Applications: | WB |
| Recommended Dilution: | WB 1:500~1:2000 |
| Reactivity: | Human, Mouse, Rat |
| Host: | Rabbit |
| Isotype: | IgG |
| Clonality: | Monoclonal |
| Immunogen: | A synthesized peptide derived from human FOLR1 |
| Specificity: | FOLR1 Antibody detects endogenous levels of total FOLR1 |
| Formulation: | Rabbit IgG in phosphate buffered saline , pH 7.4, 150mM NaCl, 0.02% sodium azide and 50% glycerol. |
| Concentration: | lot specific |
| Purification: | Affinity-chromatography |
| Conjugation: | Unconjugated |
| Storage: | Store at +4°C short term. Store at -23°C long term. Avoid freeze / thaw cycle. |
| Predicted Protein Size: | 37kDa |
| Gene Name: | folate receptor 1 (adult) |
| Database Link: | Entrez Gene 2348 Human P15328 |
| Background: | Binds to folate and reduced folic acid derivatives and mediates delivery of 5-methyltetrahydrofolate to the interior of cells. |
| Synonyms: | Adult folate binding protein; FBP; Folate receptor 1; Folate Receptor 1 Precursor; Folate receptor alpha; FOLR1; FR alpha; KB cells FBP |

[View online »](#)

Product images:

Western blot analysis of FOLR1 expression in HEK293 cell lysate.