

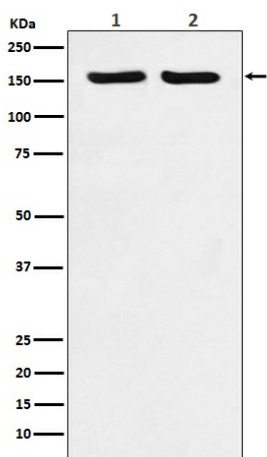
Product datasheet for **TA423186**

ROCK2 Rabbit Monoclonal Antibody

Product data:

Product Type:	Primary Antibodies
Applications:	ICC/IF, WB
Recommended Dilution:	WB 1:1000~1:5000 ICC/IF 1:50~1:200
Reactivity:	Human, Mouse, Rat
Host:	Rabbit
Isotype:	IgG
Clonality:	Monoclonal
Immunogen:	A synthesized peptide derived from human ROCK2
Specificity:	ROCK2 Antibody detects endogenous levels of total ROCK2
Formulation:	Rabbit IgG in phosphate buffered saline , pH 7.4, 150mM NaCl, 0.02% sodium azide and 50% glycerol.
Concentration:	lot specific
Purification:	Affinity-chromatography
Conjugation:	Unconjugated
Storage:	Store at +4°C short term. Store at -22°C long term. Avoid freeze / thaw cycle.
Predicted Protein Size:	161kDa
Gene Name:	Rho associated coiled-coil containing protein kinase 2
Database Link:	Entrez Gene 9475 Human O75116
Background:	Regulates the assembly of the actin cytoskeleton. Promotes formation of stress fibers and of focal adhesion complexes. Plays a role in smooth muscle contraction.
Synonyms:	p164 ROCK 2; Rho kinase 2; ROCK 2; Rock2m; Rock II; ROK alpha; ROKalpha


[View online »](#)

Product images:


Western blot analysis of ROCK2 expression in (1) HeLa cell lysate; (2) RAW264.7 cell lysate.