

Product datasheet for **TA423179**

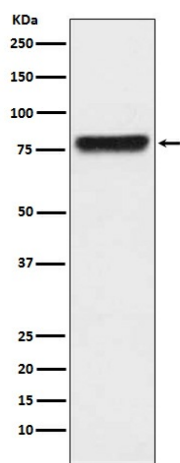
Plasma Kallikrein 1B (KLKB1) Rabbit Monoclonal Antibody

Product data:

Product Type:	Primary Antibodies
Applications:	IHC, IP, WB
Recommended Dilution:	WB 1:500~1:2000 IHC 1:50~1:200 IP 1:50
Reactivity:	Human, Rat
Host:	Rabbit
Isotype:	IgG
Clonality:	Monoclonal
Immunogen:	A synthesized peptide derived from human KLKB1
Specificity:	KLKB1 Antibody detects endogenous levels of total KLKB1
Formulation:	Rabbit IgG in phosphate buffered saline , pH 7.4, 150mM NaCl, 0.02% sodium azide and 50% glycerol.
Concentration:	lot specific
Purification:	Affinity-chromatography
Conjugation:	Unconjugated
Storage:	Store at +4°C short term. Store at -23°C long term. Avoid freeze / thaw cycle.
Predicted Protein Size:	80kDa
Gene Name:	kallikrein B1
Database Link:	Entrez Gene 3818 Human P03952
Background:	The enzyme cleaves Lys-Arg and Arg-Ser bonds. It activates, in a reciprocal reaction, factor XII after its binding to a negatively charged surface. It also releases bradykinin from HMW kininogen and may also play a role in the renin-angiotensin system by converting prorenin into renin.
Synonyms:	Fletcher factor; Kallikrein B1; kallikrein B plasma; Kininogenin; KLK3; KLKB1; PKK; PKKD; Plasma kallikrein light chain; PPK; Prekallikrein


[View online »](#)

Product images:



Western blot analysis of KLKB1 expression in human plasma lysate.