

## Product datasheet for **TA423176**

### MEIS1 Rabbit Monoclonal Antibody

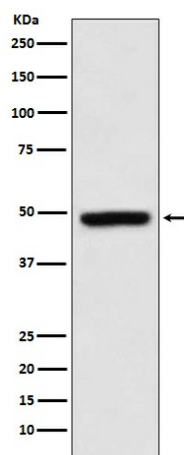
#### Product data:

Product Type:	Primary Antibodies
Applications:	FC, IP, WB
Recommended Dilution:	WB 1:1000~1:5000 IP 1:50 FC 1:50
Reactivity:	Human, Mouse, Rat
Host:	Rabbit
Isotype:	IgG
Clonality:	Monoclonal
Immunogen:	A synthesized peptide derived from human MEIS1
Specificity:	MEIS1 Antibody detects endogenous levels of total MEIS1
Formulation:	Rabbit IgG in phosphate buffered saline , pH 7.4, 150mM NaCl, 0.02% sodium azide and 50% glycerol.
Concentration:	lot specific
Purification:	Affinity-chromatography
Conjugation:	Unconjugated
Storage:	Store at +4°C short term. Store at -22°C long term. Avoid freeze / thaw cycle.
Predicted Protein Size:	47kDa
Gene Name:	Meis homeobox 1
Database Link:	<a href="#">Entrez Gene 4211 Human O00470</a>
Background:	MEIS proteins belong to the TALE (Three Amino Acid Loop Extension) homeobox containing transcription factor family. MEIS1 has been associated with leukemogenesis and neuroblastoma.
Synonyms:	Homeo box protein Meis1; Leukemogenic homolog protein; MEIS 1; Meis1; Meis1 mouse homolog; MEIS1 protein; Meis homeo box 1



[View online »](#)

## Product images:



Western blot analysis of MEIS1 expression in K562 cell lysate.