

Product datasheet for **TA423175**

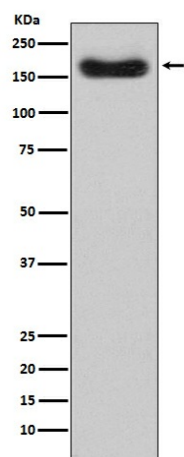
Factor H (CFH) Rabbit Monoclonal Antibody

Product data:

Product Type:	Primary Antibodies
Applications:	ICC, WB
Recommended Dilution:	WB 1:500~1:2000 ICC/IF 1:50~1:200
Reactivity:	Human
Host:	Rabbit
Isotype:	IgG
Clonality:	Monoclonal
Immunogen:	A synthesized peptide derived from human Factor H
Specificity:	Factor H Antibody detects endogenous levels of total Factor H
Formulation:	Rabbit IgG in phosphate buffered saline , pH 7.4, 150mM NaCl, 0.02% sodium azide and 50% glycerol.
Concentration:	lot specific
Purification:	Affinity-chromatography
Conjugation:	Unconjugated
Storage:	Store at +4°C short term. Store at -21°C long term. Avoid freeze / thaw cycle.
Predicted Protein Size:	180kDa
Gene Name:	complement factor H
Database Link:	Entrez Gene 3075 Human P08603
Background:	Factor H functions as a cofactor in the inactivation of C3b by factor I and also increases the rate of dissociation of the C3bBb complex (C3 convertase) and the (C3b)NBB complex (C5 convertase) in the alternative complement pathway.
Synonyms:	AHUS1; AMBP1; ARMD4; ARMS1; beta1H; CFH; CFHL3; complement factor H, isoform b; Factor H; factor H like 1; FHL1; HF1; HF2; HUS


[View online »](#)

Product images:



Western blot analysis of Factor H expression in human plasma lysate.