

Product datasheet for **TA423170**

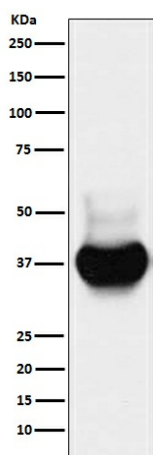
BST2 Rabbit Monoclonal Antibody

Product data:

Product Type:	Primary Antibodies
Applications:	FC, IHC, WB
Recommended Dilution:	WB 1:500~1:2000 IHC 1:50~1:200 FC 1:50
Reactivity:	Human
Host:	Rabbit
Isotype:	IgG
Clonality:	Monoclonal
Immunogen:	A synthesized peptide derived from human BST2
Specificity:	BST2 Antibody detects endogenous levels of total BST2
Formulation:	Rabbit IgG in phosphate buffered saline , pH 7.4, 150mM NaCl, 0.02% sodium azide and 50% glycerol.
Concentration:	lot specific
Purification:	Affinity-chromatography
Conjugation:	Unconjugated
Storage:	Store at +4°C short term. Store at -24°C long term. Avoid freeze / thaw cycle.
Predicted Protein Size:	28-40kDa
Gene Name:	bone marrow stromal cell antigen 2
Database Link:	Entrez Gene 684 Human Q10589
Background:	May be involved in the sorting of secreted proteins (By similarity). May be involved in pre-B-cell growth. Antiretroviral defense protein, that blocks release of retrovirus from the cell surface.
Synonyms:	Bone marrow stromal antigen 2; BST2; CD317; HM1.24 antigen; NPC A 7; Tetherin


[View online »](#)

Product images:



Western blot analysis of BST2 expression in HeLa cell lysate.