

Product datasheet for **TA423161**

Ferritin Light Chain (FTL) Rabbit Monoclonal Antibody

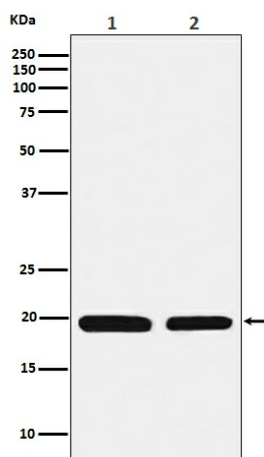
Product data:

Product Type:	Primary Antibodies
Applications:	FC, IP, WB
Recommended Dilution:	WB 1:1000~1:5000 IP 1:50 FC 1:100
Reactivity:	Human, Mouse, Rat
Host:	Rabbit
Isotype:	IgG
Clonality:	Monoclonal
Immunogen:	A synthesized peptide derived from human Ferritin Light Chain
Specificity:	Ferritin Light Chain Antibody detects endogenous levels of total Ferritin Light Chain
Formulation:	Rabbit IgG in phosphate buffered saline , pH 7.4, 150mM NaCl, 0.02% sodium azide and 50% glycerol.
Concentration:	lot specific
Purification:	Affinity-chromatography
Conjugation:	Unconjugated
Storage:	Store at +4°C short term. Store at -24°C long term. Avoid freeze / thaw cycle.
Predicted Protein Size:	20kDa
Gene Name:	ferritin, light polypeptide
Database Link:	Entrez Gene 2512 Human P02792
Background:	Stores iron in a soluble, non-toxic, readily available form. Important for iron homeostasis. Iron is taken up in the ferrous form and deposited as ferric hydroxides after oxidation. Also plays a role in delivery of iron to cells. Mediates iron uptake in capsule cells of the developing kidney.
Synonyms:	Ferritin L chain; Ferritin light chain; Ferritin light polypeptide; ferritin light polypeptide like 3; Ferritin L subunit; FTL; LFTD; NBIA 3



[View online »](#)

Product images:



Western blot analysis of Ferritin Light Chain expression in (1) HepG2 cell lysate; (2) Mouse liver lysate.