

Product datasheet for **TA423153**

CD39 (ENTPD1) Rabbit Monoclonal Antibody

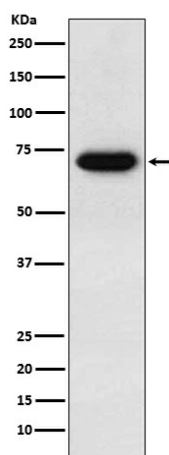
Product data:

Product Type:	Primary Antibodies
Applications:	WB
Recommended Dilution:	WB 1:500~1:2000
Reactivity:	Human, Mouse, Rat
Host:	Rabbit
Isotype:	IgG
Clonality:	Monoclonal
Immunogen:	A synthesized peptide derived from human CD39
Specificity:	CD39 Antibody detects endogenous levels of total CD39
Formulation:	Rabbit IgG in phosphate buffered saline , pH 7.4, 150mM NaCl, 0.02% sodium azide and 50% glycerol.
Concentration:	lot specific
Purification:	Affinity-chromatography
Conjugation:	Unconjugated
Storage:	Store at +4°C short term. Store at -20°C long term. Avoid freeze / thaw cycle.
Predicted Protein Size:	70kDa
Gene Name:	ectonucleoside triphosphate diphosphohydrolase 1
Database Link:	Entrez Gene 953 Human P49961
Background:	In the nervous system, could hydrolyze ATP and other nucleotides to regulate purinergic neurotransmission. Could also be implicated in the prevention of platelet aggregation. Hydrolyzes ATP and ADP equally well.
Synonyms:	ATPDase; CD39; Ecto-apyrase; Ecto-ATPDase 1; Ecto apyrase; Ecto ATP diphosphohydrolas; ENTPD1; Lymphoid cell activation antigen; NTPDase1; SPG64



[View online »](#)

Product images:



Western blot analysis of CD39 expression in human placenta lysate.