

Product datasheet for **TA423140**

NrCAM Rabbit Monoclonal Antibody

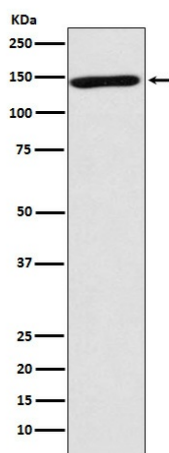
Product data:

Product Type:	Primary Antibodies
Applications:	IP, WB
Recommended Dilution:	WB 1:1000~1:5000 IP 1:20
Reactivity:	Human
Host:	Rabbit
Isotype:	IgG
Clonality:	Monoclonal
Immunogen:	A synthesized peptide derived from human NRCAM
Specificity:	NRCAM Antibody detects endogenous levels of total NRCAM
Formulation:	Rabbit IgG in phosphate buffered saline , pH 7.4, 150mM NaCl, 0.02% sodium azide and 50% glycerol.
Concentration:	lot specific
Purification:	Affinity-chromatography
Conjugation:	Unconjugated
Storage:	Store at +4°C short term. Store at -24°C long term. Avoid freeze / thaw cycle.
Predicted Protein Size:	144kDa
Gene Name:	neuronal cell adhesion molecule
Database Link:	Entrez Gene 4897 Human Q92823
Background:	Cell adhesion, ankyrin-binding protein involved in neuron-neuron adhesion. May play a role in the molecular assembly of the nodes of Ranvier.
Synonyms:	Bravo; hBravo; Neuronal cell adhesion molecule; Ng CAM related; NgCAM related cell adhesion molecule; Nr CAM; Nrcam



[View online »](#)

Product images:



Western blot analysis of NRCAM expression in human forebrain lysate.