

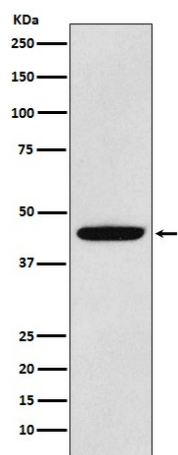
Product datasheet for **TA423138**

PDK1 Rabbit Monoclonal Antibody

Product data:

Product Type:	Primary Antibodies
Applications:	IP, WB
Recommended Dilution:	WB 1:500~1:2000 IP 1:50
Reactivity:	Human, Mouse, Rat
Host:	Rabbit
Isotype:	IgG
Clonality:	Monoclonal
Immunogen:	A synthesized peptide derived from human PDK1
Specificity:	PDK1 Antibody detects endogenous levels of total PDK1
Formulation:	Rabbit IgG in phosphate buffered saline , pH 7.4, 150mM NaCl, 0.02% sodium azide and 50% glycerol.
Concentration:	lot specific
Purification:	Affinity-chromatography
Conjugation:	Unconjugated
Storage:	Store at +4°C short term. Store at -23°C long term. Avoid freeze / thaw cycle.
Predicted Protein Size:	49kDa
Gene Name:	pyruvate dehydrogenase kinase 1
Database Link:	Entrez Gene 5163 Human Q15118
Background:	Inhibits the mitochondrial pyruvate dehydrogenase complex by phosphorylation of the E1 alpha subunit, thus contributing to the regulation of glucose metabolism.
Synonyms:	Mitochondrial pyruvate dehydrogenase kinase isoenzyme 1; PDH kinase 1; Pdk1; Pyruvate dehydrogenase kinase, isoenzyme 1; Pyruvate dehydrogenase kinase isoform 1

[View online »](#)

Product images:

Western blot analysis of PDK1 expression in LNCaP cell lysate.