

Product datasheet for **TA423134**

EP2 (PTGER2) Rabbit Monoclonal Antibody [Clone ID: OTIRA0953]

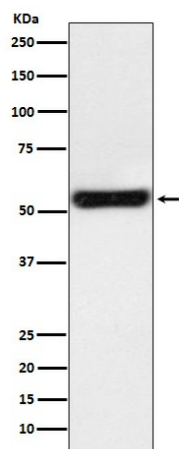
Product data:

Product Type:	Primary Antibodies
Clone Name:	OTIRA0953
Applications:	FC, ICC, ICC/IF, IHC, WB
Recommended Dilution:	WB:1/1000-2000;IHC:1/100-200;ICC/IF:1/50-200;FC:1/20-100
Reactivity:	Human, Mouse, Rat, Cow
Host:	Rabbit
Isotype:	IgG
Clonality:	Monoclonal
Immunogen:	A synthesized peptide derived from human PTGER2
Specificity:	PTGER2 Antibody detects endogenous levels of total PTGER2
Formulation:	Rabbit IgG in 10mM phosphate buffered saline , pH 7.4, 150mM sodium chloride, 0.05% BSA, 0.02% sodium azide and 50% glycerol.
Concentration:	lot specific
Purification:	Affinity-chromatography
Conjugation:	Unconjugated
Storage:	Store at +4°C short term. Store at -21°C long term. Avoid freeze / thaw cycle.
Predicted Protein Size:	52kDa
Gene Name:	prostaglandin E receptor 2
Database Link:	Entrez Gene 5732 Human P43116
Background:	Receptor for prostaglandin E2 (PGE2). The activity of this receptor is mediated by G(s) proteins that stimulate adenylate cyclase. The subsequent raise in intracellular cAMP is responsible for the relaxing effect of this receptor on smooth muscle.



Synonyms: EP2; PGE2 receptor EP2 subtype; Prostaglandin E2 receptor EP2 subtype; Prostaglandin E receptor 2 subtype EP2 53kDa; Prostanoid EP2 receptor; Ptger2

Product images:



Western blot analysis of PTGER2 expression in JAR cell lysate.