

Product datasheet for **TA423123**

Apg12 (ATG12) Rabbit Monoclonal Antibody [Clone ID: OTIRA0942]

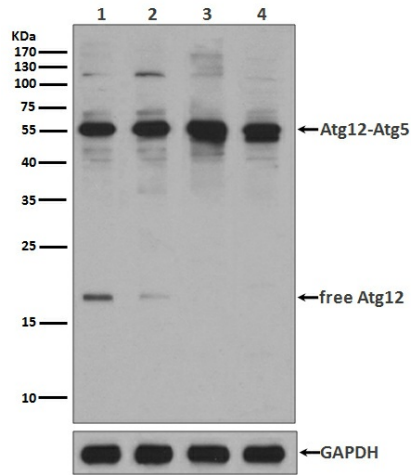
Product data:

| | |
|--------------------------------|---|
| Product Type: | Primary Antibodies |
| Clone Name: | OTIRA0942 |
| Applications: | FC, ICC/IF, IHC, IP, WB |
| Recommended Dilution: | WB 1:500~1:2000 IHC 1:50~1:200 ICC/IF 1:50~1:200 IP 1:50 FC 1:100 |
| Reactivity: | Human |
| Host: | Rabbit |
| Isotype: | IgG |
| Clonality: | Monoclonal |
| Immunogen: | A synthesized peptide derived from human Apg12(Atg12) |
| Specificity: | Apg12(Atg12) Antibody detects endogenous levels of total Apg12(Atg12) |
| Formulation: | Rabbit IgG in 10mM phosphate buffered saline , pH 7.4, 150mM sodium chloride, 0.05% BSA, 0.02% sodium azide and 50% glycerol. |
| Concentration: | lot specific |
| Purification: | Affinity-chromatography |
| Conjugation: | Unconjugated |
| Storage: | Store at +4°C short term. Store at -20°C long term. Avoid freeze / thaw cycle. |
| Predicted Protein Size: | 22,55kDa |
| Gene Name: | autophagy related 12 |
| Database Link: | Entrez Gene 9140 Human O94817 |
| Background: | Ubiquitin-like protein required for autophagy. Conjugated to ATG3 and ATG5. |



Synonyms: APG12-like; APG12L; ATG12; Autophagy-related protein 12; Autophagy 12; FBR93; HAPG12; Ubiquitin-like protein ATG12

Product images:



Western blot analysis of Apg12 (Atg12) expression in 293 cell lysate.