

Product datasheet for **TA423080**

Lipoprotein lipase (LPL) Rabbit Monoclonal Antibody

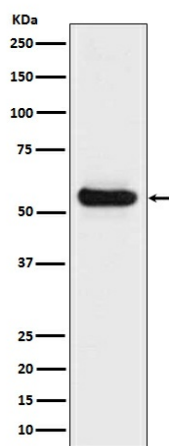
Product data:

Product Type:	Primary Antibodies
Applications:	IHC, WB
Recommended Dilution:	WB 1:1000~1:5000 IHC 1:50~1:200
Reactivity:	Human
Host:	Rabbit
Isotype:	IgG
Clonality:	Monoclonal
Immunogen:	A synthesized peptide derived from human Lipoprotein lipase
Specificity:	Lipoprotein lipase Antibody detects endogenous levels of total Lipoprotein lipase
Formulation:	Rabbit IgG in phosphate buffered saline , pH 7.4, 150mM NaCl, 0.02% sodium azide and 50% glycerol.
Concentration:	lot specific
Purification:	Affinity-chromatography
Conjugation:	Unconjugated
Storage:	Store at +4°C short term. Store at -24°C long term. Avoid freeze / thaw cycle.
Predicted Protein Size:	53kDa
Gene Name:	lipoprotein lipase
Database Link:	Entrez Gene 4023 Human P06858
Background:	The primary function of this lipase is the hydrolysis of triglycerides of circulating chylomicrons and very low density lipoproteins (VLDL). Binding to heparin sulfate proteoglycans at the cell surface is vital to the function. The apolipoprotein, APOC2, acts as a coactivator of LPL activity in the presence of lipids on the luminal surface of vascular endothelium.
Synonyms:	HDLCQ11; LIPD; Lipoprotein lipase; LPL; LPL protein



[View online »](#)

Product images:



Western blot analysis of Lipoprotein lipase expression in Human fetal liver lysate.