

Product datasheet for TA423038

ADAM10 Rabbit Monoclonal Antibody [Clone ID: OTIRA0857]

Product data:

Product Type:	Primary Antibodies
Clone Name:	OTIRA0857
Applications:	IP, WB
Recommended Dilution:	WB 1:500~1:2000 IP 1:50
Reactivity:	Human, Mouse, Rat
Host:	Rabbit
Isotype:	IgG
Clonality:	Monoclonal
Immunogen:	A synthesized peptide derived from human ADAM10
Specificity:	ADAM10 Antibody detects endogenous levels of total ADAM10
Formulation:	Rabbit IgG in 10mM phosphate buffered saline , pH 7.4, 150mM sodium chloride, 0.05% BSA, 0.02% sodium azide and 50% glycerol.
Concentration:	lot specific
Purification:	Affinity-chromatography
Conjugation:	Unconjugated
Storage:	Store at +4°C short term. Store at -23°C long term. Avoid freeze / thaw cycle.
Predicted Protein Size:	84kDa
Gene Name:	ADAM metallopeptidase domain 10
Database Link:	Entrez Gene 102 Human O14672

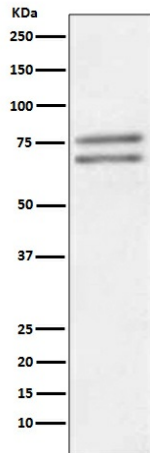


Background:

The ADAM10 prodomain acts as a chaperone that stabilizes mature ADAM protein folding, and prevents target-protein shedding through inhibition of ADAM10 proteinase activity. Mature ADAM10 is the major α -secretase responsible for cleavage of Notch, APP, cadherins, and prion protein. The ADAM10 protein cleaves receptor tyrosine kinases and their associated ligands and displays a wide range of regulatory functions across related signaling pathways.

Synonyms:

ADAM10; CD156c; CDw156; KUZ; MADM

Product images:

Western blot analysis of ADAM10 expression in Jurkat cell lysate.