

Product datasheet for **TA423002**

Rhodopsin (RHO) Rabbit Monoclonal Antibody

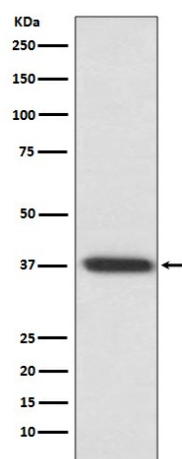
Product data:

Product Type:	Primary Antibodies
Applications:	IHC, WB
Recommended Dilution:	WB 1:500~1:2000 IHC 1:50~1:200
Reactivity:	Human, Rat
Host:	Rabbit
Isotype:	IgG
Clonality:	Monoclonal
Immunogen:	A synthesized peptide derived from human Rhodopsin
Specificity:	Rhodopsin Antibody detects endogenous levels of total Rhodopsin
Formulation:	Rabbit IgG in phosphate buffered saline , pH 7.4, 150mM NaCl, 0.02% sodium azide and 50% glycerol.
Concentration:	lot specific
Purification:	Affinity-chromatography
Conjugation:	Unconjugated
Storage:	Store at +4°C short term. Store at -20°C long term. Avoid freeze / thaw cycle.
Predicted Protein Size:	39kDa
Gene Name:	rhodopsin
Database Link:	Entrez Gene 6010 Human P08100
Background:	Photoreceptor required for image-forming vision at low light intensity. Required for photoreceptor cell viability after birth. Light-induced isomerization of 11-cis to all-trans retinal triggers a conformational change leading to G-protein activation and release of all-trans retinal.
Synonyms:	CSNBAD1; OPN2; opsd; Opsin2; Opsin 2 rod pigment; Retinitis pigmentosa 4 autosomal dominant; RHO; Rhodopsin; RP4



[View online »](#)

Product images:



Western blot analysis of Rhodopsin expression in rat eyeball lysate.