

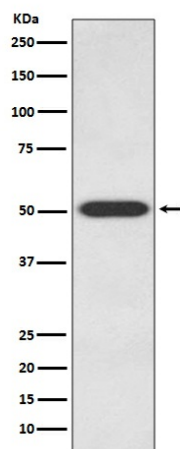
Product datasheet for TA422986

Endothelin B Receptor (EDNRB) Rabbit Monoclonal Antibody

Product data:

Product Type:	Primary Antibodies
Applications:	IP, WB
Recommended Dilution:	WB 1:500~1:2000 IP 1:50
Reactivity:	Human
Host:	Rabbit
Isotype:	IgG
Clonality:	Monoclonal
Immunogen:	A synthesized peptide derived from human Endothelin B Receptor
Specificity:	Endothelin B Receptor Antibody detects endogenous levels of total Endothelin B Receptor
Formulation:	Rabbit IgG in phosphate buffered saline , pH 7.4, 150mM NaCl, 0.02% sodium azide and 50% glycerol.
Concentration:	lot specific
Purification:	Affinity-chromatography
Conjugation:	Unconjugated
Storage:	Store at +4°C short term. Store at -22°C long term. Avoid freeze / thaw cycle.
Predicted Protein Size:	50kDa
Gene Name:	endothelin receptor type B
Database Link:	Entrez Gene 1910 Human P24530
Background:	Non-specific receptor for endothelin 1, 2, and 3. Mediates its action by association with G proteins that activate a phosphatidylinositol-calcium second messenger system.
Synonyms:	ABCD5; Ednra; EDNRB; Endothelin B receptor precursor; ETB; ETBR; ETRB; Hirschsprung disease


[View online »](#)

Product images:

Western blot analysis of Endothelin B Receptor expression in 293T cell lysate.