

Product datasheet for TA422955

Albumin (ALB) Rabbit Monoclonal Antibody [Clone ID: OTIRA0774]

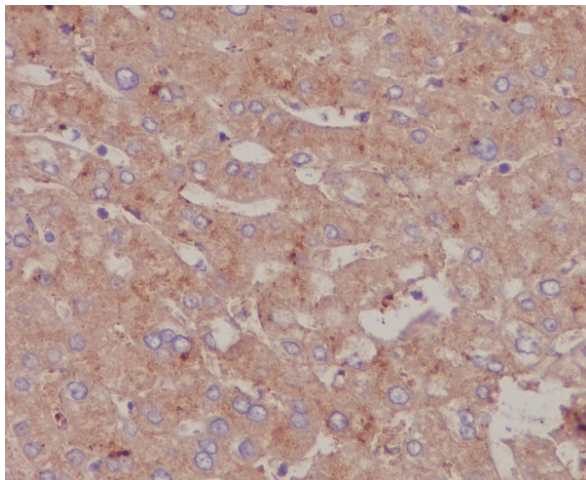
Product data:

Product Type:	Primary Antibodies
Clone Name:	OTIRA0774
Applications:	IHC, WB
Recommended Dilution:	WB:1/1000-2000;IHC:1/100-200
Reactivity:	Human, Mouse, Rat, Cow
Host:	Rabbit
Isotype:	IgG
Clonality:	Monoclonal
Immunogen:	A synthesized peptide derived from Cow Bovine Serum Albumin
Specificity:	Bovine Serum Albumin Antibody detects endogenous levels of total Bovine Serum Albumin
Formulation:	Rabbit IgG in 10mM phosphate buffered saline , pH 7.4, 150mM sodium chloride, 0.05% BSA, 0.02% sodium azide and 50% glycerol.
Concentration:	lot specific
Purification:	Affinity-chromatography
Conjugation:	Unconjugated
Storage:	Store at +4°C short term. Store at -21°C long term. Avoid freeze / thaw cycle.
Predicted Protein Size:	69kDa
Gene Name:	albumin
Database Link:	Entrez Gene 213 Human P02768
Background:	Albumin is a soluble, monomeric protein which comprises about one-half of the blood serum protein. Albumin functions primarily as a carrier protein for steroids, fatty acids, and thyroid hormones and plays a role in stabilizing extracellular fluid volume.

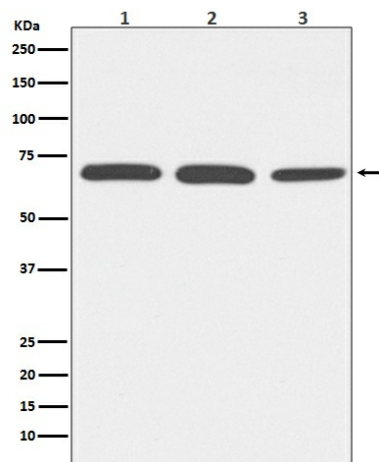


Synonyms: ALB; Albumin; Albumin (32 AA); Albumin (AA 34); BSA; Serum albumin

Product images:



Immunohistochemical analysis of paraffin-embedded human liver, using Bovine Serum Albumin Antibody.



Western blot analysis of Bovine Serum Albumin expression in (1) HeLa cell lysate; (2) NIH/3T3 cell lysate; (3) PC-12 cell lysate.