

## Product datasheet for **TA422909**

### **PDI (PDIA2) Rabbit Monoclonal Antibody**

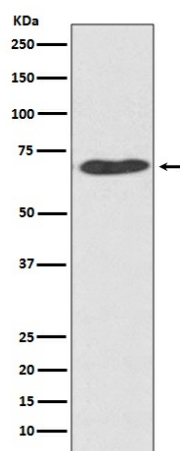
#### **Product data:**

Product Type:	Primary Antibodies
Applications:	FC, WB
Recommended Dilution:	WB 1:500~1:2000 FC 1:50
Reactivity:	Human, Mouse, Rat
Host:	Rabbit
Isotype:	IgG
Clonality:	Monoclonal
Immunogen:	A synthesized peptide derived from human PDI
Specificity:	PDI Antibody detects endogenous levels of total PDI
Formulation:	Rabbit IgG in phosphate buffered saline , pH 7.4, 150mM NaCl, 0.02% sodium azide and 50% glycerol.
Concentration:	lot specific
Purification:	Affinity-chromatography
Conjugation:	Unconjugated
Storage:	Store at +4°C short term. Store at -23°C long term. Avoid freeze / thaw cycle.
Predicted Protein Size:	58kDa
Gene Name:	protein disulfide isomerase family A member 2
Database Link:	<a href="#">Entrez Gene 64714 Human Q13087</a>
Background:	Acts as an intracellular estrogen-binding protein. May be involved in modulating cellular levels and biological functions of estrogens in the pancreas. May act as a chaperone that inhibits aggregation of misfolded proteins.
Synonyms:	P4HB; PDIA2; PDIR



[View online »](#)

## Product images:



Western blot analysis of PDI expression in HeLa cell lysate.