

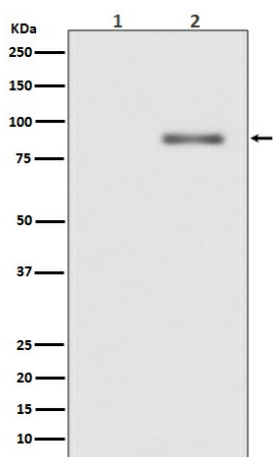
## Product datasheet for TA422902

### PKC alpha (PRKCA) Rabbit Monoclonal Antibody

#### Product data:

Product Type:	Primary Antibodies
Applications:	ICC/IF, IHC, IP, WB
Recommended Dilution:	WB 1:1000~1:5000 IHC 1:50~1:200 ICC/IF 1:50~1:200 IP 1:50
Reactivity:	Human, Mouse, Rat
Host:	Rabbit
Isotype:	IgG
Clonality:	Monoclonal
Immunogen:	A synthesized peptide derived from human Phospho-PKC alpha (T638)
Specificity:	Phospho-PKC alpha (T638) Antibody detects endogenous levels of total Phospho-PKC alpha (T638)
Formulation:	Rabbit IgG in phosphate buffered saline , pH 7.4, 150mM NaCl, 0.02% sodium azide and 50% glycerol.
Concentration:	lot specific
Purification:	Affinity-chromatography
Conjugation:	Unconjugated
Storage:	Store at +4°C short term. Store at -20°C long term. Avoid freeze / thaw cycle.
Predicted Protein Size:	80kDa
Gene Name:	protein kinase C alpha
Database Link:	<a href="#">Entrez Gene 5578 Human P17252</a>
Background:	PKC alpha is an AGC kinase of the PKC family. A classical PKC downstream of many mitogenic and receptors. Classical PKCs are calcium-dependent enzymes that are activated by phosphatidylserine, diacylglycerol and phorbol esters.
Synonyms:	alpha type; EC 2.7.11.13; kinase PKC-alpha; KPCA; PKC-A; PKC-alpha; PKC-III; PKC III; PRKACA; PRKCA; Protein kinase C


[View online »](#)

**Product images:**

Western blot analysis of Phospho-PKC alpha (T638) expression in (1) Jurkat cell lysate treated with TPA; (2) Jurkat cell lysate.