

Product datasheet for **TA422898**

BMP11 (GDF11) Rabbit Monoclonal Antibody

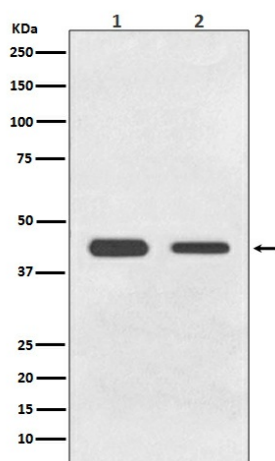
Product data:

Product Type:	Primary Antibodies
Applications:	ICC/IF, IHC, WB
Recommended Dilution:	WB 1:500~1:2000 IHC 1:50~1:200 ICC/IF 1:50~1:200
Reactivity:	Human, Rat
Host:	Rabbit
Isotype:	IgG
Clonality:	Monoclonal
Immunogen:	A synthesized peptide derived from human BMP11
Specificity:	BMP11 Antibody detects endogenous levels of total BMP11
Formulation:	Rabbit IgG in phosphate buffered saline , pH 7.4, 150mM NaCl, 0.02% sodium azide and 50% glycerol.
Concentration:	lot specific
Purification:	Affinity-chromatography
Conjugation:	Unconjugated
Storage:	Store at +4°C short term. Store at -23°C long term. Avoid freeze / thaw cycle.
Predicted Protein Size:	45kDa
Gene Name:	growth differentiation factor 11
Database Link:	Entrez Gene 10220 Human O95390
Background:	Secreted signal that acts globally to specify positional identity along the anterior/posterior axis during development. Play critical roles in patterning both mesodermal and neural tissues and in establishing the skeletal pattern.
Synonyms:	BMP-11; BMP11; Bone morphogenetic protein 11; GDF-11; GDF11



[View online »](#)

Product images:



Western blot analysis of BMP11 expression in (1) HeLa cell lysate; (2) C6 cell lysate.