

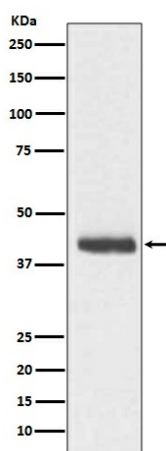
Product datasheet for **TA422895**

Doublecortin (DCX) Rabbit Monoclonal Antibody

Product data:

Product Type:	Primary Antibodies
Applications:	FC, WB
Recommended Dilution:	WB 1:500~1:2000 FC 1:50~1:200
Reactivity:	Human, Mouse, Rat
Host:	Rabbit
Isotype:	IgG
Clonality:	Monoclonal
Immunogen:	A synthesized peptide derived from human DCX
Specificity:	DCX Antibody detects endogenous levels of total DCX
Formulation:	Rabbit IgG in phosphate buffered saline , pH 7.4, 150mM NaCl, 0.02% sodium azide and 50% glycerol.
Concentration:	lot specific
Purification:	Affinity-chromatography
Conjugation:	Unconjugated
Storage:	Store at +4°C short term. Store at -21°C long term. Avoid freeze / thaw cycle.
Predicted Protein Size:	45kDa
Gene Name:	doublecortin
Database Link:	Entrez Gene 1641 Human O43602
Background:	Mutations in Doublecortin cause Lissencephaly (smooth brain), a neuronal migration disorder characterized by epilepsy and mental retardation. Doublecortin is a microtubule associated protein that stabilizes and bundles microtubules. A conserved doublecortin domain mediates the interaction with microtubules, and interestingly most missense mutations cluster in this domain.
Synonyms:	DBCN; DC; DCX; doublecortin; Dublin; LISX; SCLH; XLIS

[View online »](#)

Product images:

Western blot analysis of DCX expression in C6 cell lysate.