

Product datasheet for TA422880

Glutathione Peroxidase 1 (GPXI) Rabbit Monoclonal Antibody [Clone ID: OTIRA0699]

Product data:

Product Type:	Primary Antibodies
Clone Name:	OTIRA0699
Applications:	ICC/IF, IHC, IP, WB
Recommended Dilution:	WB 1:500~1:2000 IHC 1:50~1:200 ICC/IF 1:50~1:200 IP 1:50
Reactivity:	Human, Rat
Host:	Rabbit
Isotype:	IgG
Clonality:	Monoclonal
Immunogen:	A synthesized peptide derived from human GPXI
Specificity:	GPXI Antibody detects endogenous levels of total GPXI
Formulation:	Rabbit IgG in 10mM phosphate buffered saline , pH 7.4, 150mM sodium chloride, 0.05% BSA, 0.02% sodium azide and 50% glycerol.
Concentration:	lot specific
Purification:	Affinity-chromatography
Conjugation:	Unconjugated
Storage:	Store at +4°C short term. Store at -24°C long term. Avoid freeze / thaw cycle.
Predicted Protein Size:	22kDa
Gene Name:	glutathione peroxidase 1
Database Link:	Entrez Gene 2876 Human P07203

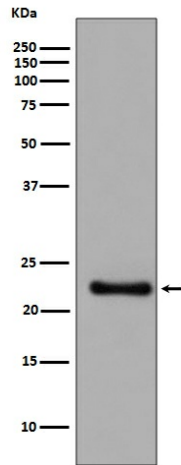


Background:

Glutathione peroxidase 1 (GPX1) is a cytosolic selenoprotein which reduces hydrogen peroxide to water. GPX1 is the most abundant and ubiquitous among the five GPX isoforms identified so far. It is an important component in the anti-oxidative defense in cells and is associated with a variety of disease conditions, such as colon cancer, coronary artery disease and insulin resistance.

Synonyms:

Glutathione Peroxidase 1; GPX1; GSHPX1; MGC14399; MGC88245

Product images:

Western blot analysis of GPX1 expression in SH SY5Y cell lysate.