

Product datasheet for TA422863

Phospho mTOR (Ser2448) Rabbit Monoclonal Antibody [Clone ID: OTIRA0682]

Product data:

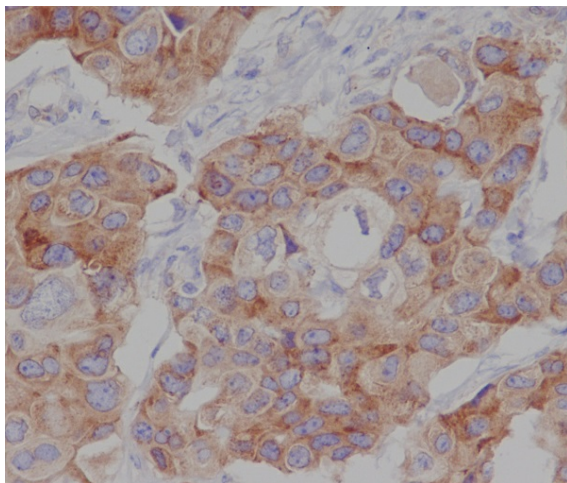
Product Type:	Primary Antibodies
Clone Name:	OTIRA0682
Applications:	IHC, WB
Recommended Dilution:	WB:1/1000-2000;IHC:1/100-200
Reactivity:	Human, Mouse, Rat, Pig
Host:	Rabbit
Isotype:	IgG
Clonality:	Monoclonal
Immunogen:	A synthesized peptide derived from human Phospho-mTOR (S2448)
Specificity:	Phospho-mTOR (S2448) Antibody detects endogenous levels of total Phospho-mTOR (S2448)
Formulation:	Rabbit IgG in 10mM phosphate buffered saline , pH 7.4, 150mM sodium chloride, 0.05% BSA, 0.02% sodium azide and 50% glycerol.
Concentration:	lot specific
Purification:	Affinity-chromatography
Conjugation:	Unconjugated
Storage:	Store at +4°C short term. Store at -20°C long term. Avoid freeze / thaw cycle.
Predicted Protein Size:	289kDa
Gene Name:	mechanistic target of rapamycin
Database Link:	Entrez Gene 2475 Human P42345



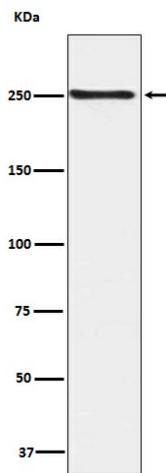
Background: An atypical kinase belonging to the PIKK family of kinases. Controls cell growth through protein synthesis regulation. Downstream of PI3K/Akt pathway and required for cell survival. Acts as the target for the cell-cycle arrest and immunosuppressive effects of the FKBP12-rapamycin complex.

Synonyms: FRAP; FRAP1; FRAP2; kinase mTOR; RAFT1; Rapamycin target protein

Product images:



Immunohistochemical analysis of paraffin-embedded human breast cancer, using Phospho-mTOR (S2448) Antibody.



Western blot analysis of Phospho-mTOR (S2448) expression in HEK293 cell lysate.