

## Product datasheet for **TA422861**

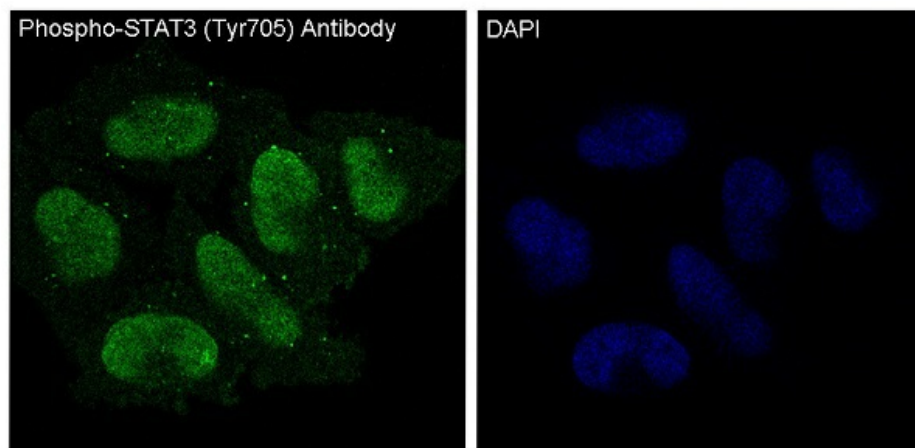
### STAT3 Rabbit Monoclonal Antibody

#### Product data:

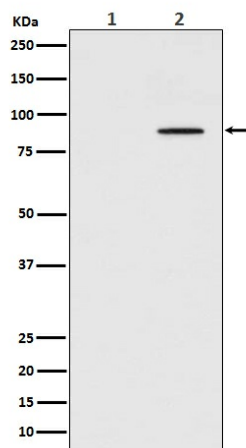
Product Type:	Primary Antibodies
Applications:	ICC/IF, IHC, IP, WB
Recommended Dilution:	WB 1:5000~1:10000 IHC 1:50~1:100 ICC/IF 1:50~1:000 IP 1:30
Reactivity:	Human, Mouse, Rat
Host:	Rabbit
Isotype:	IgG
Clonality:	Monoclonal
Immunogen:	A synthesized peptide derived from human STAT3
Specificity:	Phospho-STAT3 (Y705) Antibody detects endogenous levels of total Phospho-STAT3 (Y705)
Formulation:	Rabbit IgG in phosphate buffered saline , pH 7.4, 150mM NaCl, 0.02% sodium azide and 50% glycerol.
Concentration:	lot specific
Purification:	Affinity-chromatography
Conjugation:	Unconjugated
Storage:	Store at +4°C short term. Store at -24°C long term. Avoid freeze / thaw cycle.
Predicted Protein Size:	88kDa
Gene Name:	signal transducer and activator of transcription 3
Database Link:	<a href="#">Entrez Gene 6774 Human P40763</a>
Background:	The protein encoded by this gene is a member of the STAT protein family. In response to cytokines and growth factors, STAT family members are phosphorylated by the receptor associated kinases, and then form homo- or heterodimers that translocate to the cell nucleus where they act as transcription activators. This protein is activated through phosphorylation in response to various cytokines and growth factors including IFNs, EGF, IL5, IL6, HGF, LIF and BMP2.
Synonyms:	Acute-phase response factor; APRF; HIES; Stat3


[View online »](#)

## Product images:



Immunofluorescent analysis of HeLa cells treated with IFN-alpha, using Phospho-STAT3 (Y705) Antibody.



Western blot analysis of Phospho-STAT3 (Tyr705) expression in (1) HeLa cell lysate; (2) HeLa cell lysate treated with IFN-a.