

Product datasheet for **TA422851**

Estrogen Receptor beta (ESR2) Rabbit Monoclonal Antibody

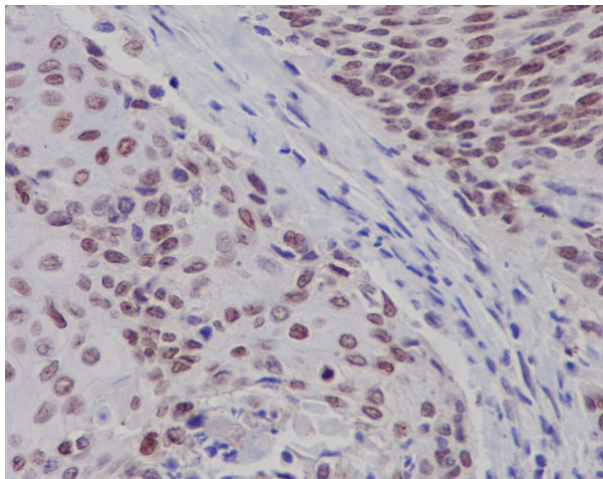
Product data:

Product Type:	Primary Antibodies
Applications:	IHC, WB
Recommended Dilution:	WB 1:500~1:2000 IHC 1:50~1:200
Reactivity:	Human
Host:	Rabbit
Isotype:	IgG
Clonality:	Monoclonal
Immunogen:	A synthesized peptide derived from human Estrogen Receptor beta
Specificity:	Estrogen Receptor beta Antibody detects endogenous levels of total Estrogen Receptor beta
Formulation:	Rabbit IgG in phosphate buffered saline , pH 7.4, 150mM NaCl, 0.02% sodium azide and 50% glycerol.
Concentration:	lot specific
Purification:	Affinity-chromatography
Conjugation:	Unconjugated
Storage:	Store at +4°C short term. Store at -24°C long term. Avoid freeze / thaw cycle.
Predicted Protein Size:	59kDa
Gene Name:	estrogen receptor 2
Database Link:	Entrez Gene 2100 Human Q92731
Background:	Nuclear hormone receptor. Binds estrogens with an affinity similar to that of ESR1, and activates expression of reporter genes containing estrogen response elements (ERE) in an estrogen-dependent manner (PubMed:20074560).
Synonyms:	ESR2; ESTRB; Estrogen receptor beta; NR3A2

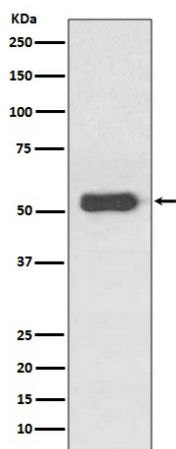


[View online »](#)

Product images:



Immunohistochemical analysis of paraffin-embedded human cervix cancer, using Estrogen Receptor beta Antibody.



Western blot analysis of Estrogen Receptor beta expression in MCF-7 Cell Lysate.