

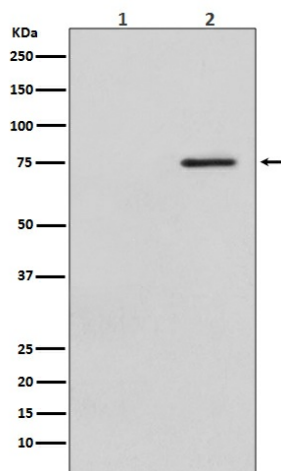
## Product datasheet for **TA422819**

### RAF1 Rabbit Monoclonal Antibody

#### Product data:

Product Type:	Primary Antibodies
Applications:	WB
Recommended Dilution:	WB 1:500~1:2000
Reactivity:	Human, Mouse, Rat
Host:	Rabbit
Isotype:	IgG
Clonality:	Monoclonal
Immunogen:	A synthesized peptide derived from human Phospho-Raf1 (S621)
Specificity:	Phospho-Raf1 (S621) Antibody detects endogenous levels of total Phospho-Raf1 (S621)
Formulation:	Rabbit IgG in phosphate buffered saline , pH 7.4, 150mM NaCl, 0.02% sodium azide and 50% glycerol.
Concentration:	lot specific
Purification:	Affinity-chromatography
Conjugation:	Unconjugated
Storage:	Store at +4°C short term. Store at -23°C long term. Avoid freeze / thaw cycle.
Predicted Protein Size:	73kDa
Gene Name:	Raf-1 proto-oncogene, serine/threonine kinase
Database Link:	<a href="#">Entrez Gene 5894 Human P04049</a>
Background:	Activated ERKs are pleiotropic effectors of cell physiology and play an important role in the control of gene expression involved in the cell division cycle, apoptosis, cell differentiation and cell migration.
Synonyms:	C-Raf; CRAF; kinase Raf1; Protein kinase raf 1; RAF1; Raf proto-oncogene serine/threonine-protein kinase

[View online »](#)

**Product images:**

Western blot analysis of Phospho-Raf1 (S621) expression in (1) HeLa cell lysate treated with LP; (2) HeLa cell lysate.