

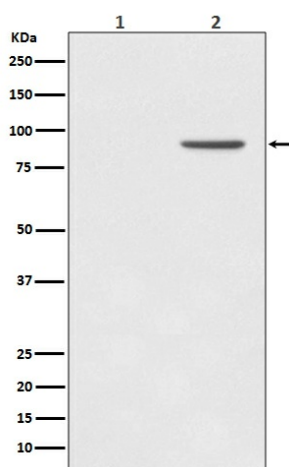
Product datasheet for **TA422797**

STAT1 Rabbit Monoclonal Antibody

Product data:

Product Type:	Primary Antibodies
Applications:	WB
Recommended Dilution:	WB 1:1000~1:2000
Reactivity:	Human
Host:	Rabbit
Isotype:	IgG
Clonality:	Monoclonal
Immunogen:	A synthesized peptide derived from human STAT1
Specificity:	Phospho-STAT1 (Y701) Antibody detects endogenous levels of Phospho-STAT1 (Y701)
Formulation:	Rabbit IgG in phosphate buffered saline , pH 7.4, 150mM NaCl, 0.02% sodium azide and 50% glycerol.
Concentration:	lot specific
Purification:	Affinity-chromatography
Conjugation:	Unconjugated
Storage:	Store at +4°C short term. Store at -22°C long term. Avoid freeze / thaw cycle.
Predicted Protein Size:	87kDa
Gene Name:	signal transducer and activator of transcription 1
Database Link:	Entrez Gene 6772 Human P42224
Background:	The Stat1 transcription factor is activated in response to a large number of ligands and is essential for responsiveness to IFN- α and IFN- γ . Stat1 protein exists as a pair of isoforms, Stat1 α (91 kDa) and the splice variant Stat1 β (84 kDa). In most cells, both isoforms are activated by IFN- α , but only Stat1 α is activated by IFN- γ . The inappropriate activation of Stat1 occurs in many tumors.
Synonyms:	CANDF7; ISGF 3; Signal transducer and activator of transcription 1; Stat1; STAT91; Transcription factor ISGF-3 components p91/p84


[View online »](#)

Product images:

Western blot analysis of Phospho-STAT1 (Y701) expression in (1) A431 cell lysate; (2) A431 lysate cell treated with EGF.